



Section 3.5

Kita Stallings

Collin Wilkinson

Valerie Johnson

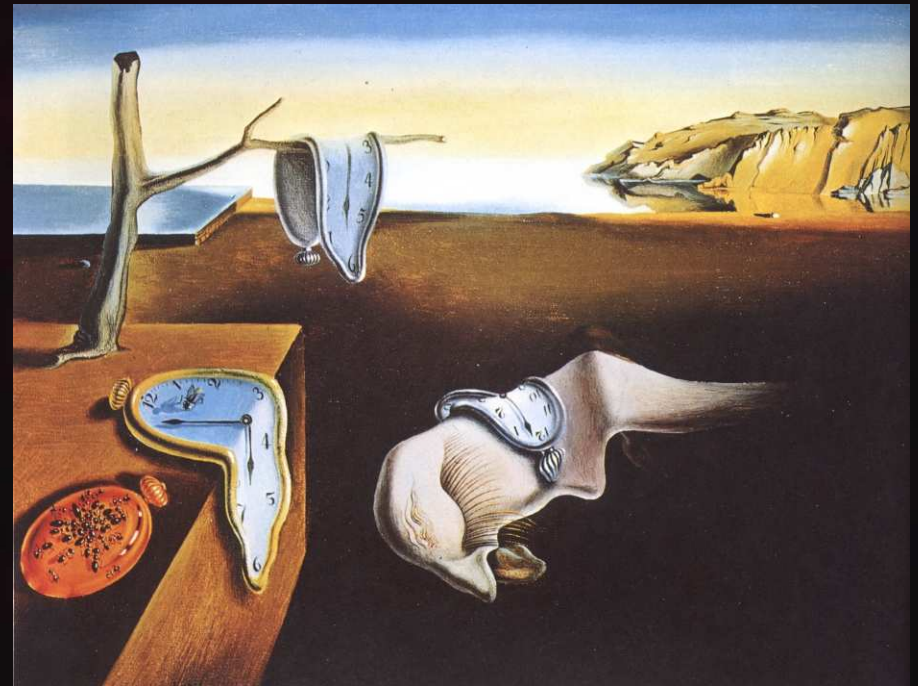
Freezing

- As Energy leaves the liquid the molecules lose energy creating a solid
- Basically Liquid to a Solid

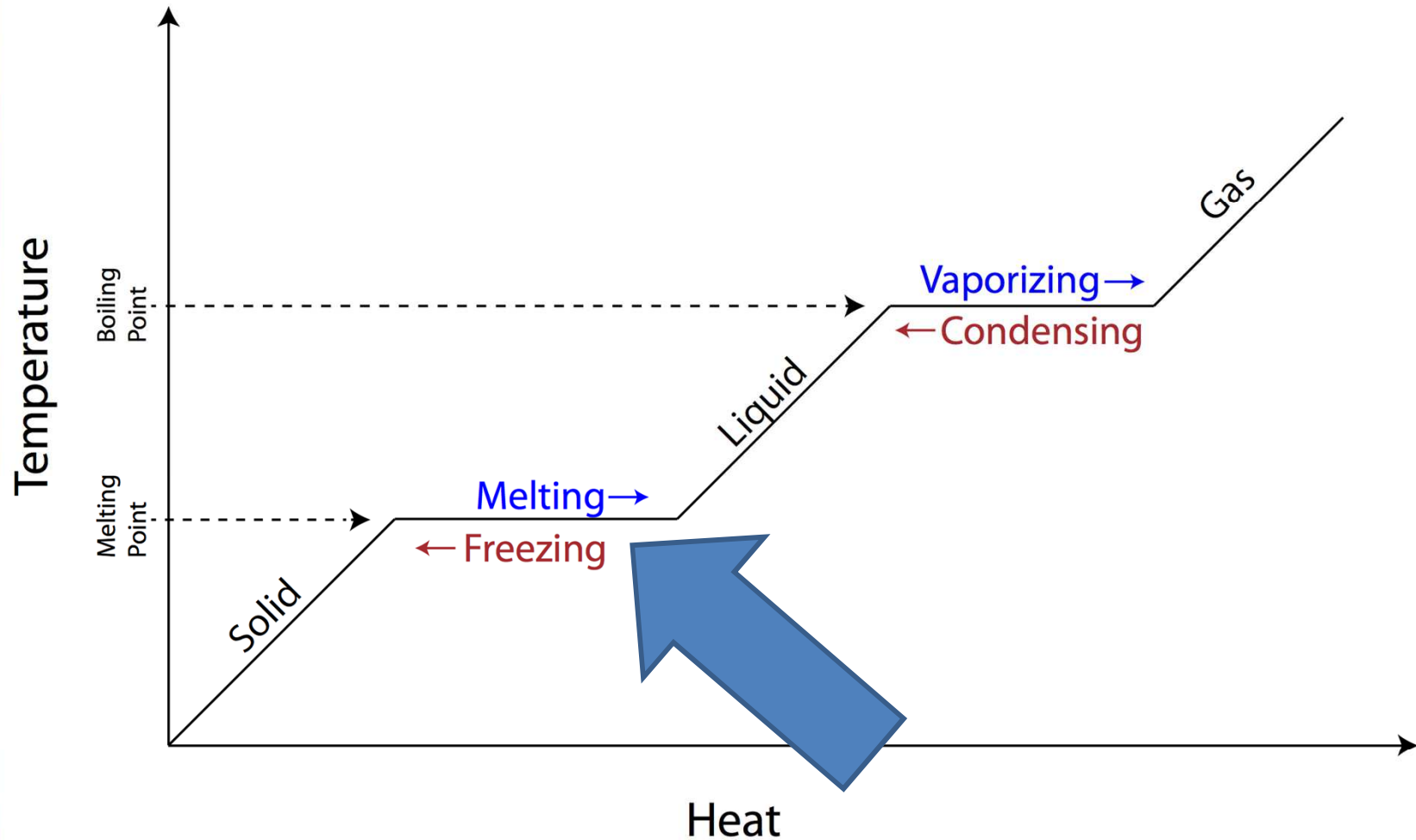


Melting

- As energy is gained the solid particles they break the bonds and become a liquid
- Basically Solid to a Liquid



Molar Enthalpy of Fusion



Sublimation and Deposition

- Deposition Gas to a Solid
- Sublimation is reverse
- Dry Ice and Iodine very common substances

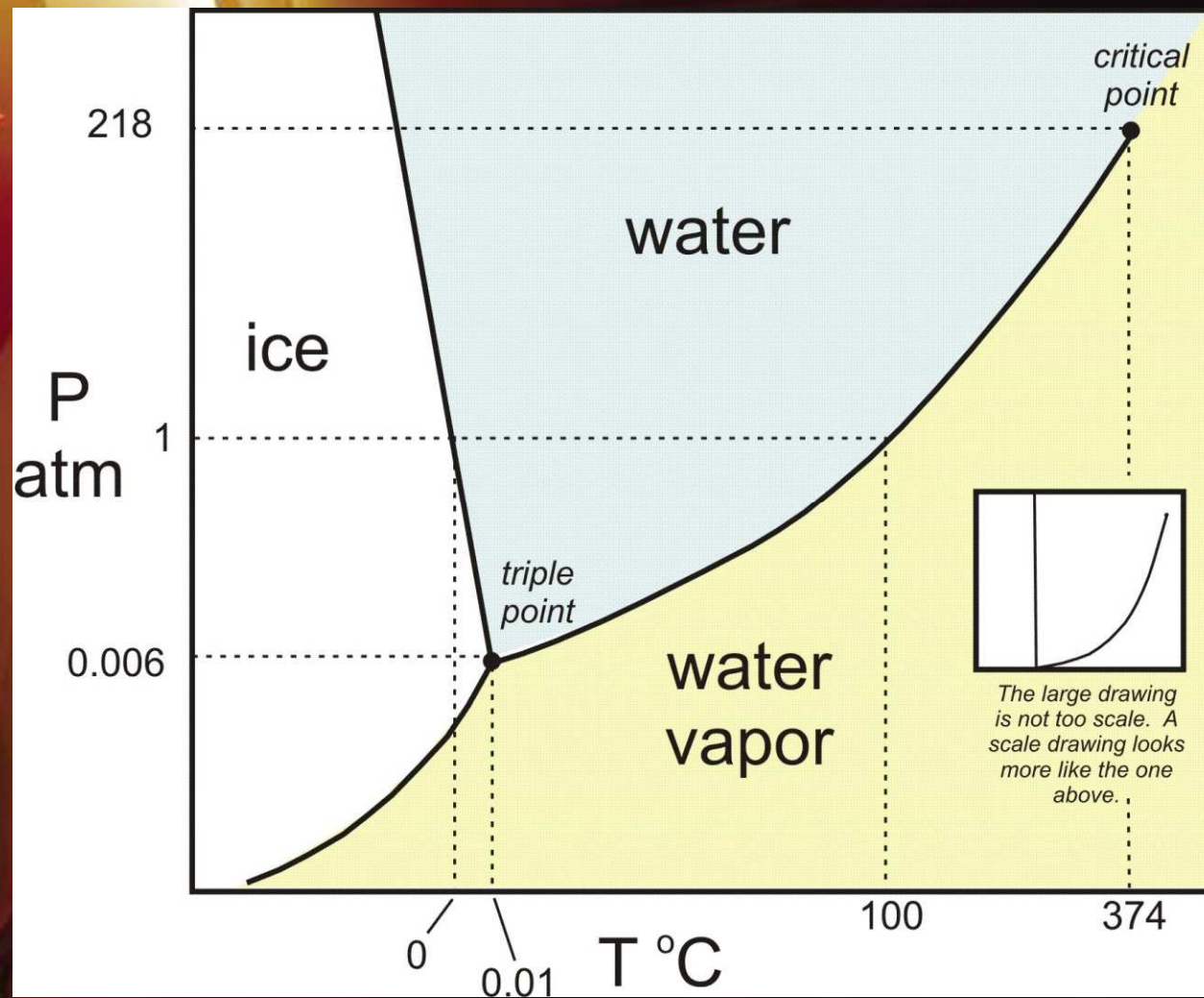




Phase Diagrams

- Illustrates Relationships between pressures, states, and Temperatures
- Shows the Critical point is where the critical temperature and pressure are at
- Critical Temp is the temp which a substance cannot exist in a liquid state
- Critical Pressure is the lowest pressure a substance can be a liquid

Phase Diagram of Water



States of Matter

